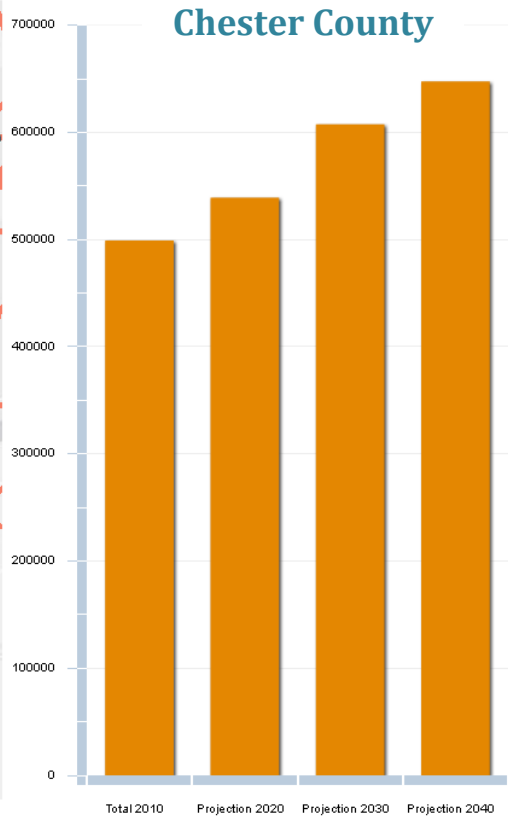
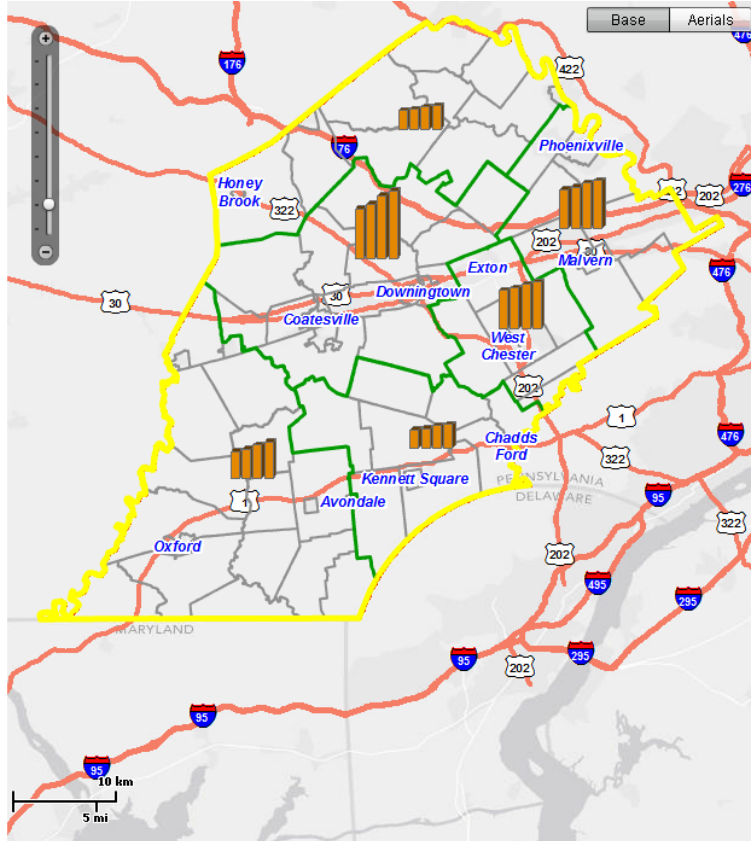


# Chester County Demographic Snapshot

Prepared by Peggy Wadsworth

SOURCE: Chester County Community Profiles Interactive Data Resource <http://www.landscapes2.org/ccpc/profiles/communityprofiles.html> retrieved 1/26/13

## Report for Total Population and Population Projections



\*Community Charts are shown at the County scale.

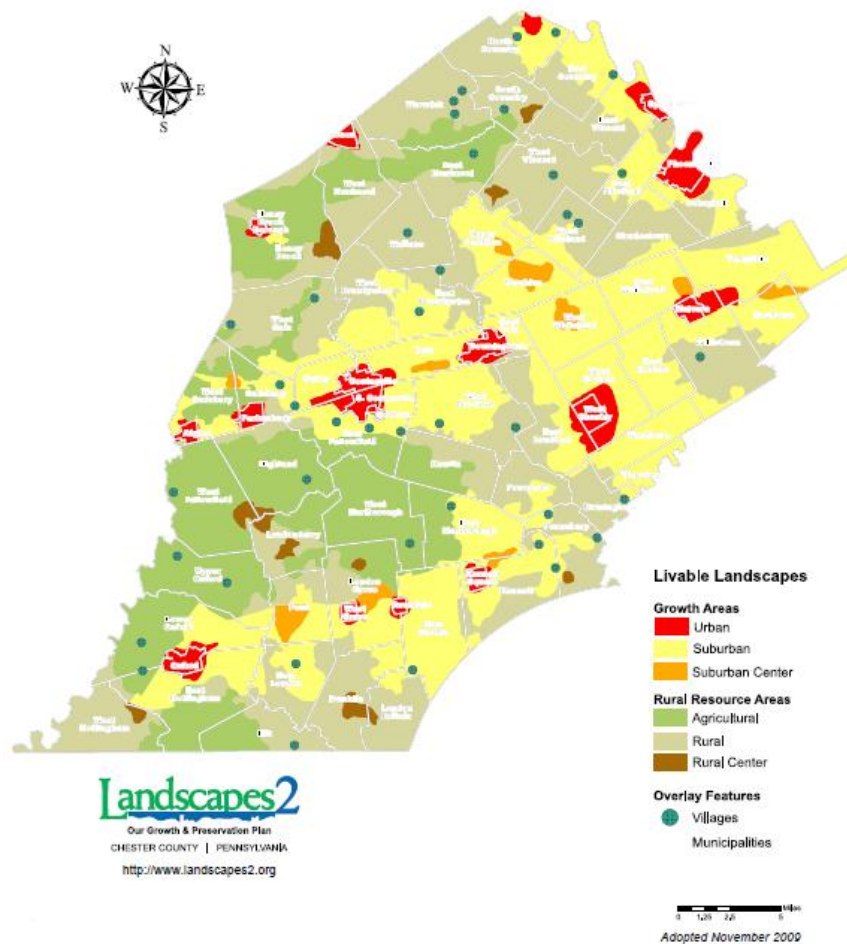
REGION/ School District	1990	2000	2010	2015 Forecast	2020 Forecast	2025 Forecast	2030 Forecast	2035 Forecast	2040 Forecast	Change '10-'40
<b>CHESTER COUNTY</b>	<b>376,396</b>	<b>433,501</b>	<b>498,886</b>	<b>516,582</b>	<b>538,809</b>	<b>573,130</b>	<b>607,407</b>	<b>629,634</b>	<b>647,330</b>	<b>148,444</b>
<b>CENTRAL</b>	<b>95,913</b>	<b>108,683</b>	<b>131,467</b>	<b>137,166</b>	<b>144,324</b>	<b>155,377</b>	<b>166,420</b>	<b>173,578</b>	<b>179,277</b>	<b>47,810</b>
Coatesville SD	47,701	51,423	62,976	65,804	69,356	74,840	80,319	83,871	86,699	23,723
Downingtown SD	48,212	57,260	68,491	71,362	74,968	80,537	86,101	89,707	92,578	24,087
<b>EASTERN</b>	<b>87,503</b>	<b>94,085</b>	<b>101,660</b>	<b>104,538</b>	<b>108,152</b>	<b>113,734</b>	<b>119,310</b>	<b>122,924</b>	<b>125,802</b>	<b>24,142</b>
Great Valley SD	23,476	26,454	29,816	30,705	31,820	33,543	35,265	36,380	37,269	7,453
Phoenixville Area SD	26,429	28,299	32,035	33,036	34,294	36,237	38,177	39,435	40,436	8,401
Tredyffrin - Easttown SD	37,598	39,332	39,809	40,797	42,038	43,954	45,868	47,109	48,097	8,288
<b>NORTHERN</b>	<b>36,578</b>	<b>40,708</b>	<b>48,882</b>	<b>50,553</b>	<b>52,653</b>	<b>55,895</b>	<b>59,131</b>	<b>61,231</b>	<b>62,902</b>	<b>14,020</b>
Owen J. Roberts SD	24,084	26,848	32,804	33,882	35,234	37,324	39,411	40,763	41,841	9,037
Spring - Ford Area SD	3,433	3,305	3,323	3,444	3,597	3,832	4,067	4,220	4,341	1,018
Twin Valley SD	9,061	10,555	12,755	13,227	13,822	14,739	15,653	16,248	16,720	3,965
<b>SOUTHEASTERN</b>	<b>31,247</b>	<b>40,204</b>	<b>47,140</b>	<b>48,878</b>	<b>51,060</b>	<b>54,429</b>	<b>57,794</b>	<b>59,976</b>	<b>61,714</b>	<b>14,574</b>
Kennett Consolidated SD	15,272	20,807	25,621	26,634	27,907	29,870	31,831	33,104	34,117	8,496
Unionville - Chadds Ford SD	15,975	19,397	21,519	22,244	23,153	24,559	25,963	26,872	27,597	6,078
<b>SOUTHWESTERN</b>	<b>43,983</b>	<b>55,707</b>	<b>69,324</b>	<b>72,396</b>	<b>76,257</b>	<b>82,219</b>	<b>88,169</b>	<b>92,030</b>	<b>95,102</b>	<b>25,778</b>
Avon Grove SD	17,432	23,067	30,080	31,590	33,487	36,417	39,341	41,238	42,748	12,668
Octorara Area SD	10,750	12,276	13,430	13,954	14,613	15,629	16,642	17,301	17,825	4,395
Oxford Area SD	15,801	20,364	25,814	26,852	28,157	30,173	32,186	33,491	34,529	8,715
<b>WEST CHESTER</b>	<b>81,172</b>	<b>94,114</b>	<b>100,413</b>	<b>103,051</b>	<b>106,363</b>	<b>111,476</b>	<b>116,583</b>	<b>119,895</b>	<b>122,533</b>	<b>22,120</b>
West Chester SD	81,172	94,114	100,413	103,051	103,363	111,476	116,583	119,895	122,533	22,120

# Chester County Demographic Snapshot

Prepared by Peggy Wadsworth

SOURCE: Chester County Community Profiles Interactive Data Resource <http://www.landscapes2.org/ccpc/profiles/communityprofiles.html> retrieved 1/26/13

## Livable Landscapes



**Growth Areas** contain and are planned for a full range of public infrastructure services, including utilities, transportation, community facilities and parks. These areas contain large employment, commercial and population centers and large areas of residential development. **The growth areas can best accommodate the majority of growth anticipated in Chester County by the year 2030.**

**Rural Resource Areas** contain important agricultural, environmental and scenic resources that contribute to the traditional, rural character of Chester County. These lands are appropriate for conservation and preservation activities and serve as a target area for the county's agricultural and municipal open space preservation programs. **Rural resource areas are located outside of designated county growth areas.**

## FIVE COUNTY COMPARISON

COUNTY	2000	2010	2015 Forecast	2020 Forecast	2025 Forecast	2030 Forecast	2035 Forecast	2040 Forecast	Absolute change 2010-2040	Percent change 2010-2040
Bucks County	597,636	625,249	634,879	654,140	673,290	692,440	709,795	727,150	101,901	16.3%
<b>Chester County</b>	<b>433,512</b>	<b>498,886</b>	<b>516,581</b>	<b>538,809</b>	<b>573,108</b>	<b>607,407</b>	<b>629,635</b>	<b>647,330</b>	<b>148,444</b>	<b>29.8%</b>
Delaware County	551,989	558,979	559,501	560,986	564,481	567,976	569,461	569,983	11,004	2.0%
Montgomery County	748,978	799,874	808,531	823,564	848,463	873,361	887,364	894,486	94,612	11.8%
Philadelphia County	1,517,550	1,526,006	1,536,124	1,551,247	1,572,342	1,599,436	1,618,512	1,630,589	104,583	6.9%
<b>5 S.E. PA Counties</b>	<b>3,849,665</b>	<b>4,008,994</b>	<b>4,055,616</b>	<b>4,128,746</b>	<b>4,231,684</b>	<b>4,340,620</b>	<b>4,414,767</b>	<b>4,469,538</b>	<b>460,544</b>	<b>11.5%</b>

Source: Delaware Valley Regional Planning Commission, January 2012

## NOTES

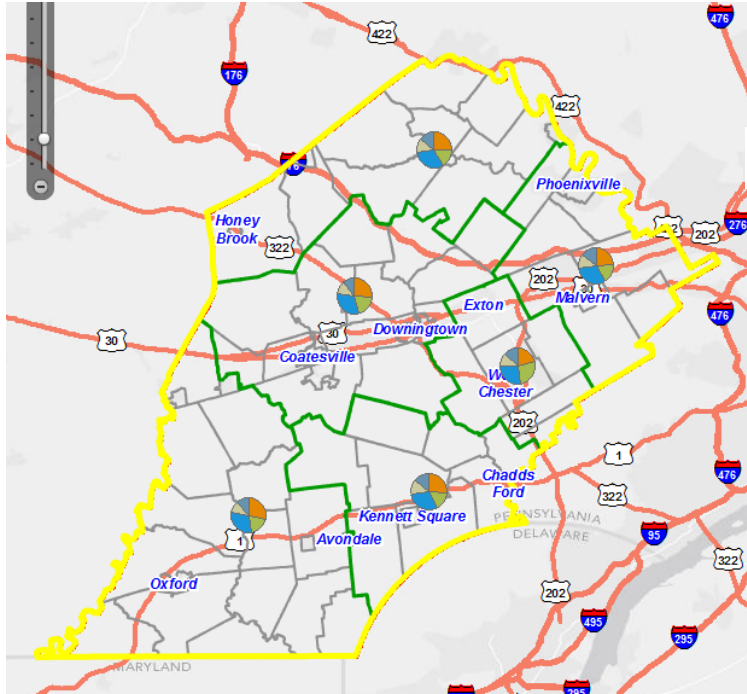
- Chester County is the 7th most populous county in Pennsylvania based on 2010-Census data.
- Chester County is the first county in Pennsylvania to initiate a strategic planning process and has a Aaa rating on its bonds from Moody's Investors Service as well as Aaa ratings from Standard & Poor's and Fitch Ratings. Established by William Penn as one of Pennsylvania's three original counties, Chester County has been named by Forbes.com as one of America's best places to raise a family and is ranked the healthiest county in Pennsylvania by the Robert Wood Johnson Foundation and the University of Wisconsin Population Health Institute.

# Chester County Demographic Snapshot

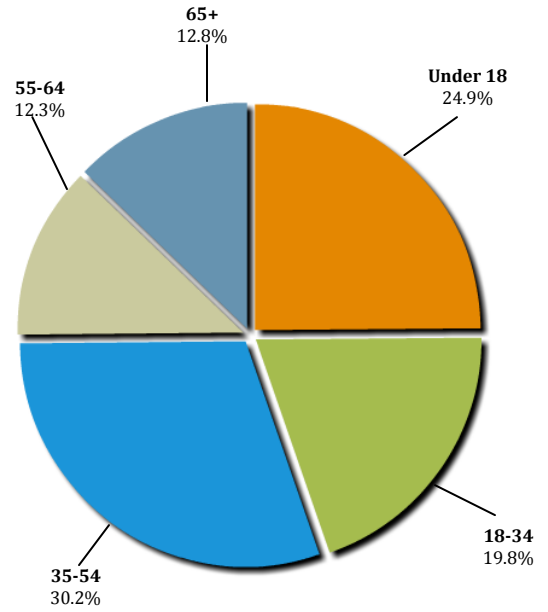
Prepared by Peggy Wadsworth

SOURCE: Chester County Community Profiles Interactive Data Resource <http://www.landscapes2.org/ccpc/profiles/communityprofiles.html> retrieved 1/26/13

## Age and Gender Groups

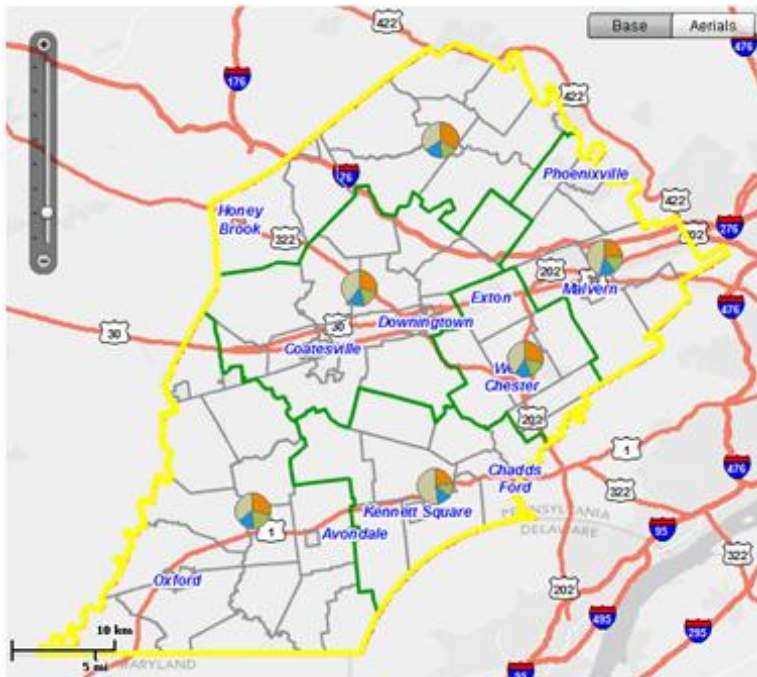


### Chester County

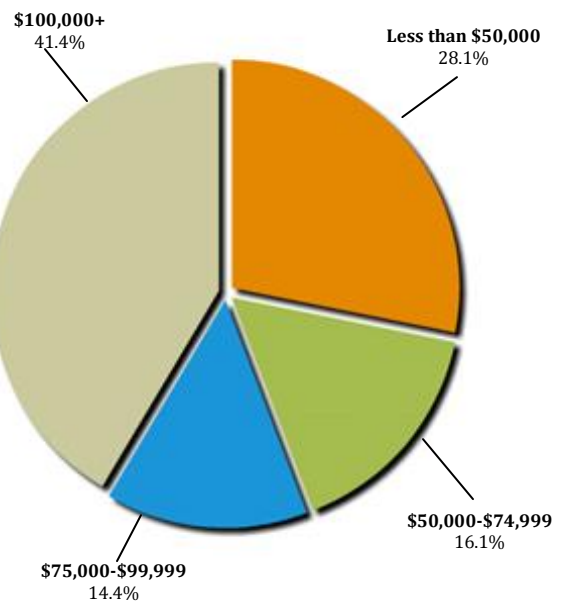


REGION	Under 18	18-34	35-54	55-64	65 and Over	Males	Females
CHESTER COUNTY	124,055	98,875	150,509	61,572	63,875	245,161	253,725
CENTRAL	35,002	24,782	41,638	16,259	13,786	65,210	66,257
EASTERN	23,992	18,037	31,331	13,335	14,965	48,917	52,743
NORTHERN	12,203	8,041	15,144	6,202	7,292	24,136	24,746
SOUTHEASTERN	12,106	7,657	14,331	6,318	6,728	23,944	23,196
SOUTHWESTERN	19,555	13,472	21,060	7,503	7,734	34,432	34,892
WEST CHESTER	21,197	26,886	27,005	11,955	13,370	48,522	51,891

## Household Income



### Chester County



REGION	Total Households	Less than \$50,000	\$50,000-\$74,999	\$75,000-\$99,999	\$100,000 or more
CHESTER COUNTY	181,136	50,964	29,047	26,047	75,078
CENTRAL	47,345	14,138	7,597	6,879	18,731
EASTERN	39,727	9,908	6,089	5,519	18,211
NORTHERN	17,728	6,012	2,666	2,785	6,265
SOUTHEASTERN	15,858	3,489	2,047	1,973	8,349
SOUTHWESTERN	21,743	6,426	4,183	3,393	7,741
WEST CHESTER	38,735	10,991	6,465	5,498	15,781

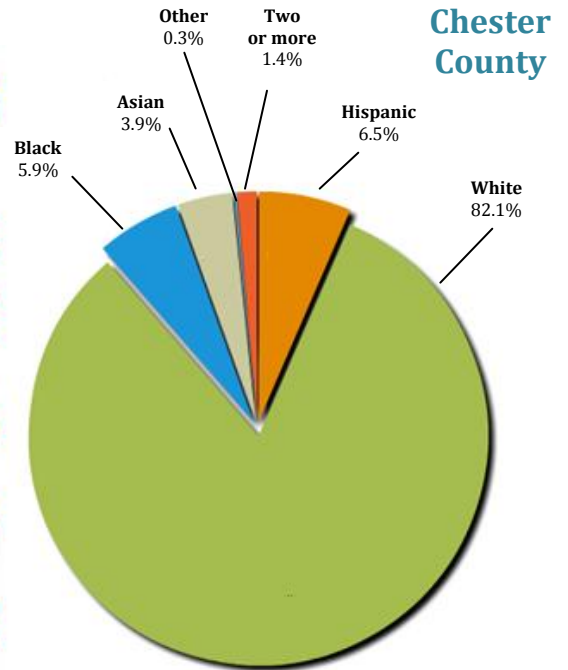
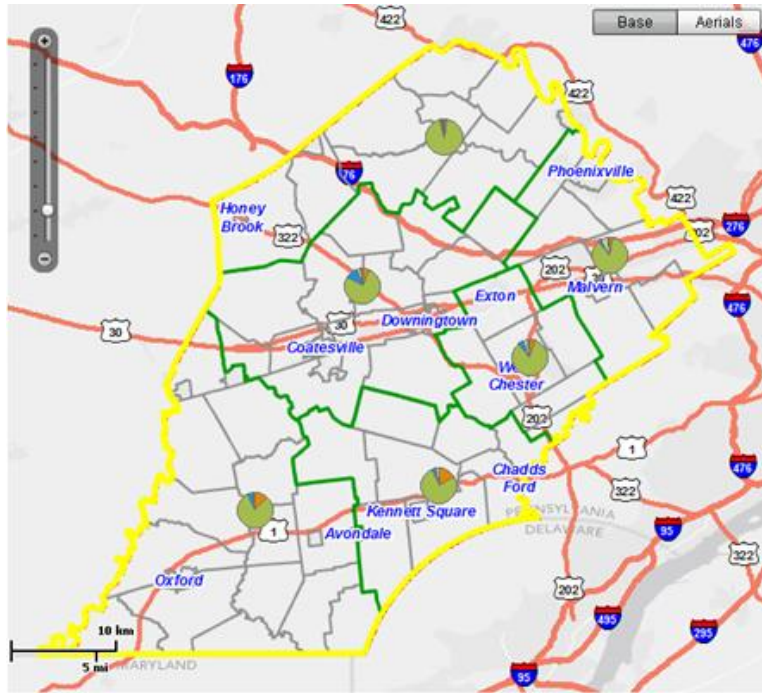


# Chester County Demographic Snapshot

Prepared by Peggy Wadsworth

SOURCE: Chester County Community Profiles Interactive Data Resource <http://www.landscapes2.org/ccpc/profiles/communityprofiles.html> retrieved 1/26/13

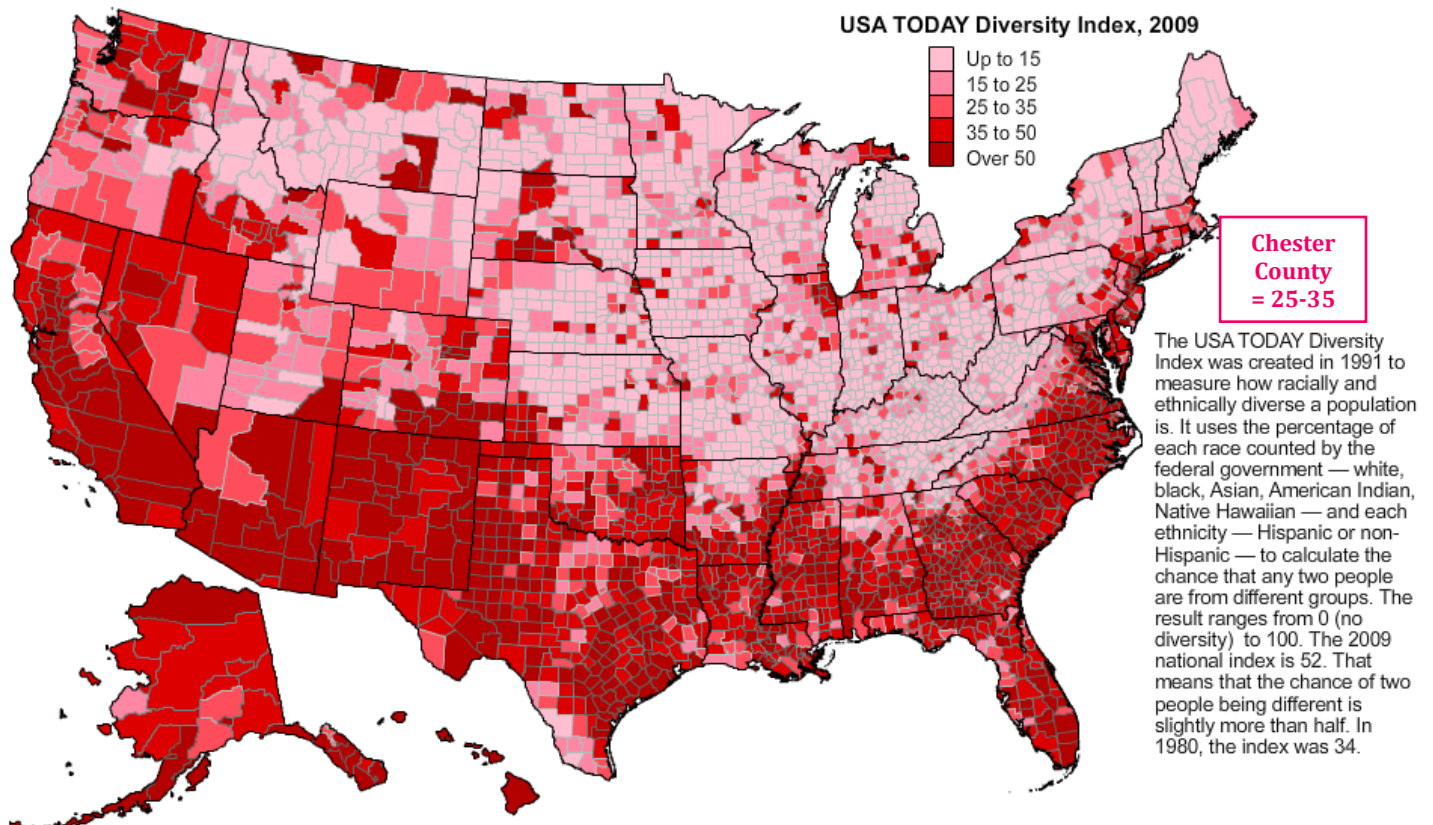
## Population by Race



REGION	Total Population	Hispanic & Latino	White	Black	Asian	Other	Two or More
CHESTER COUNTY	498,886	32,503	409,561	29,388	19,216	1,252	6,966
CENTRAL	131,467	7,325	101,916	14,236	5,288	357	2,345
EASTERN	101,660	3,568	86,197	3,554	6,718	298	1,325
NORTHERN	48,882	1,014	45,506	1,057	595	133	577
SOUTHEASTERN	47,140	7,693	36,103	1,405	1,378	94	467
SOUTHWESTERN	69,324	8,149	55,428	4,090	593	155	909
WEST CHESTER	100,413	4,754	84,411	5,046	4,644	215	1,343

## A county-by-county look at diversity

Racial and ethnic diversity have increased significantly since 2000, new Census data show. The probability that two people chosen at random in each of the USA's 3,143 counties would be of a different race or ethnicity (on a 0-100 scale):



Sources: Source: Analysis of 2009 Census Bureau estimates by Paul Overberg, USA TODAY